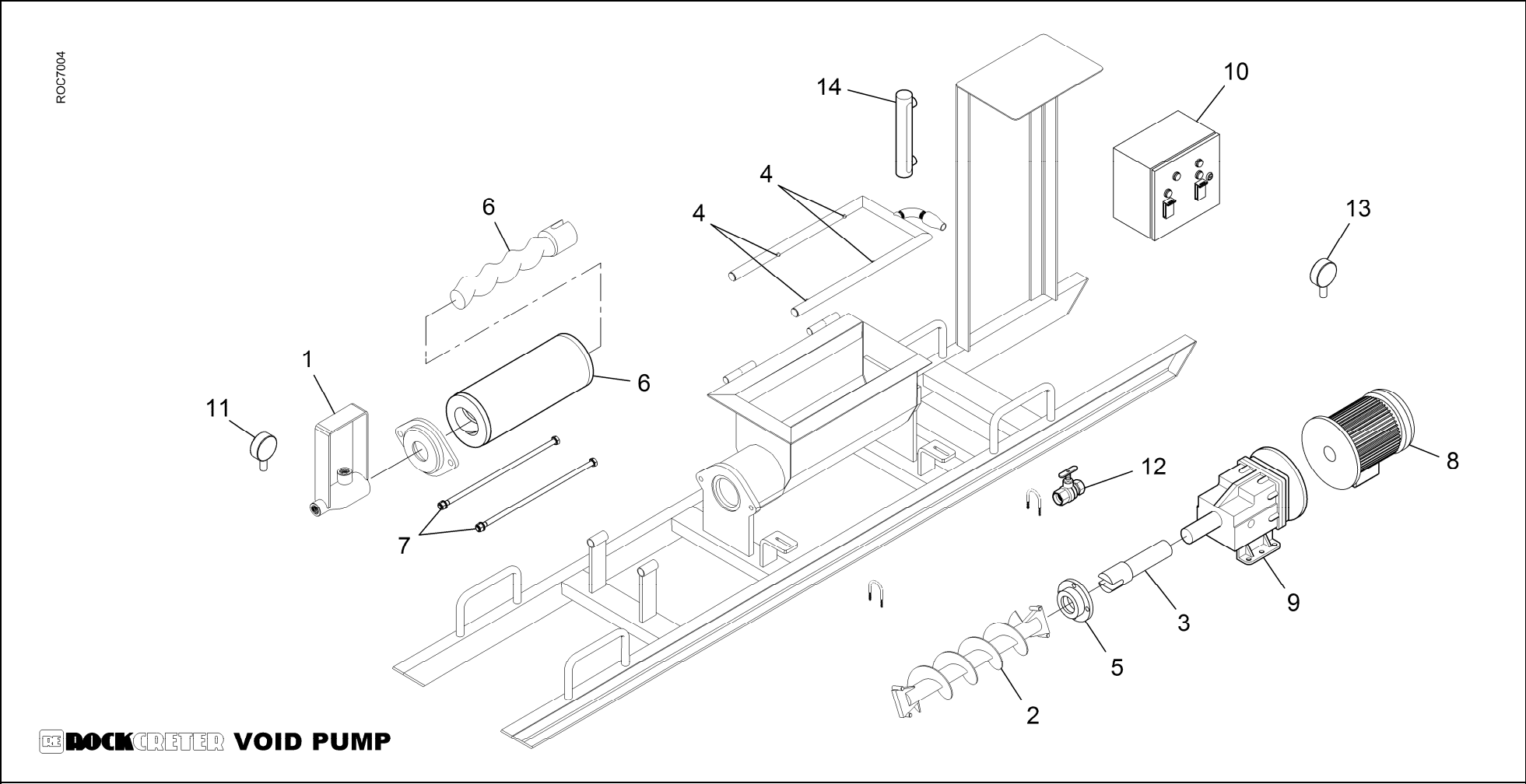


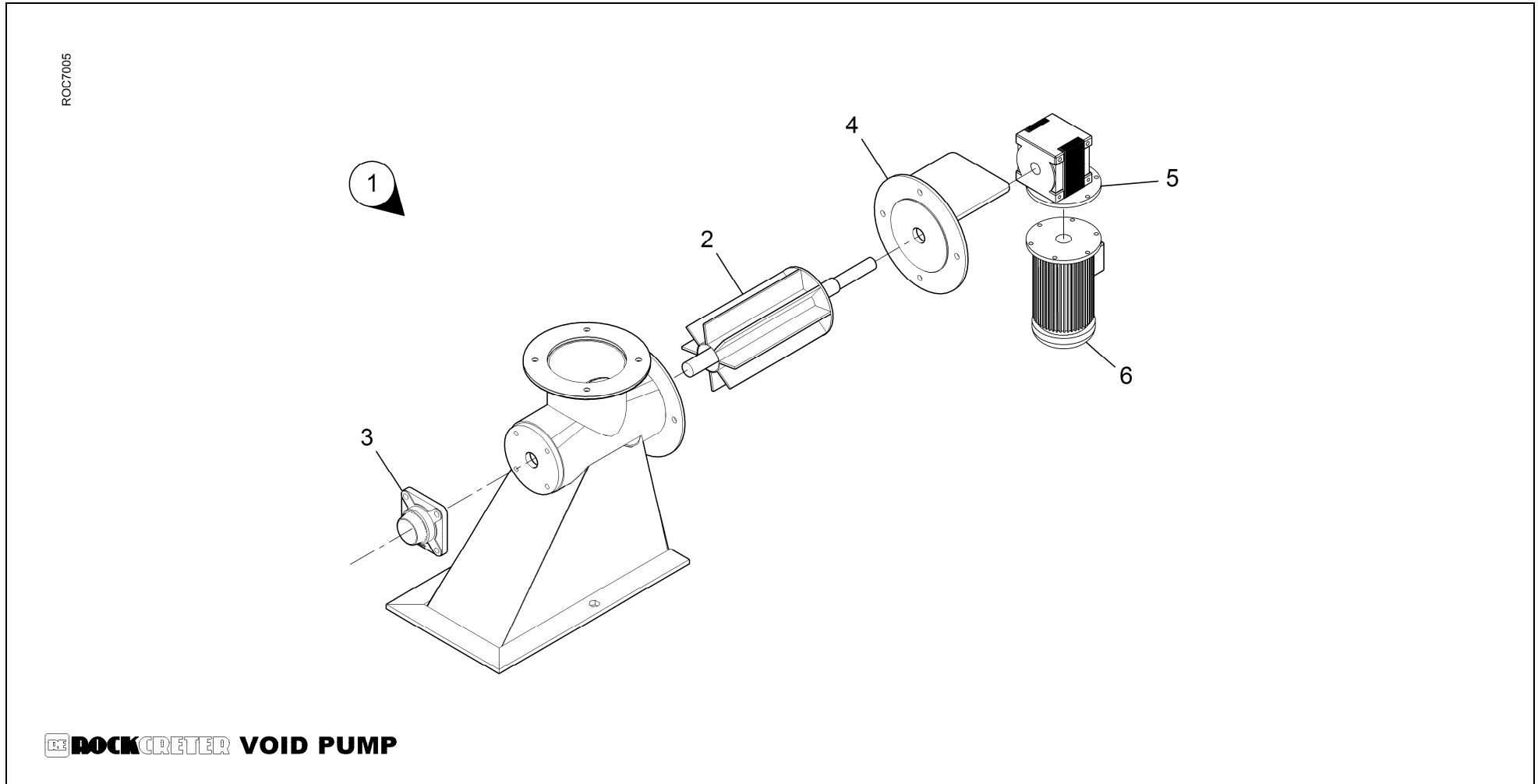
2. PUMP SECTION COMPLETE



2. PUMP SECTION COMPLETE

ITEM NO	DESCRIPTION	PART NO	QTY	COMMENTS
1	MRT FRONT BRACKET AND REDUCER	KGPF006A	1	
2	AUGER C70	KGPF003	1	
3	DRIVE SHAFT C70A	KGPF007A	1	
4	WATER JETS	V009	4	
5	STUFFING BOX COMPLETE	KGPF001	1	
6	MRT ROTOR / STATOR SET	KGPF005A	1	
7	STATOR BOLTS	KGPF017-580	1	
8	ELECTRIC MOTOR 525V – 7.5 kW	EA028C	1	
9	C70 INLINE GEARBOX	KGPF203	1	
10	BOX CONTROL DUAL – 525V – 7.5kW	EA037A	1	
11	GROUT PRESSURE GAUGE	EA035A	1	
12	PV18	PV18	2	
13	PRESSURE GAUGE	EA035B	1	
14	WATER FLOW METER	KGPF009C	1	

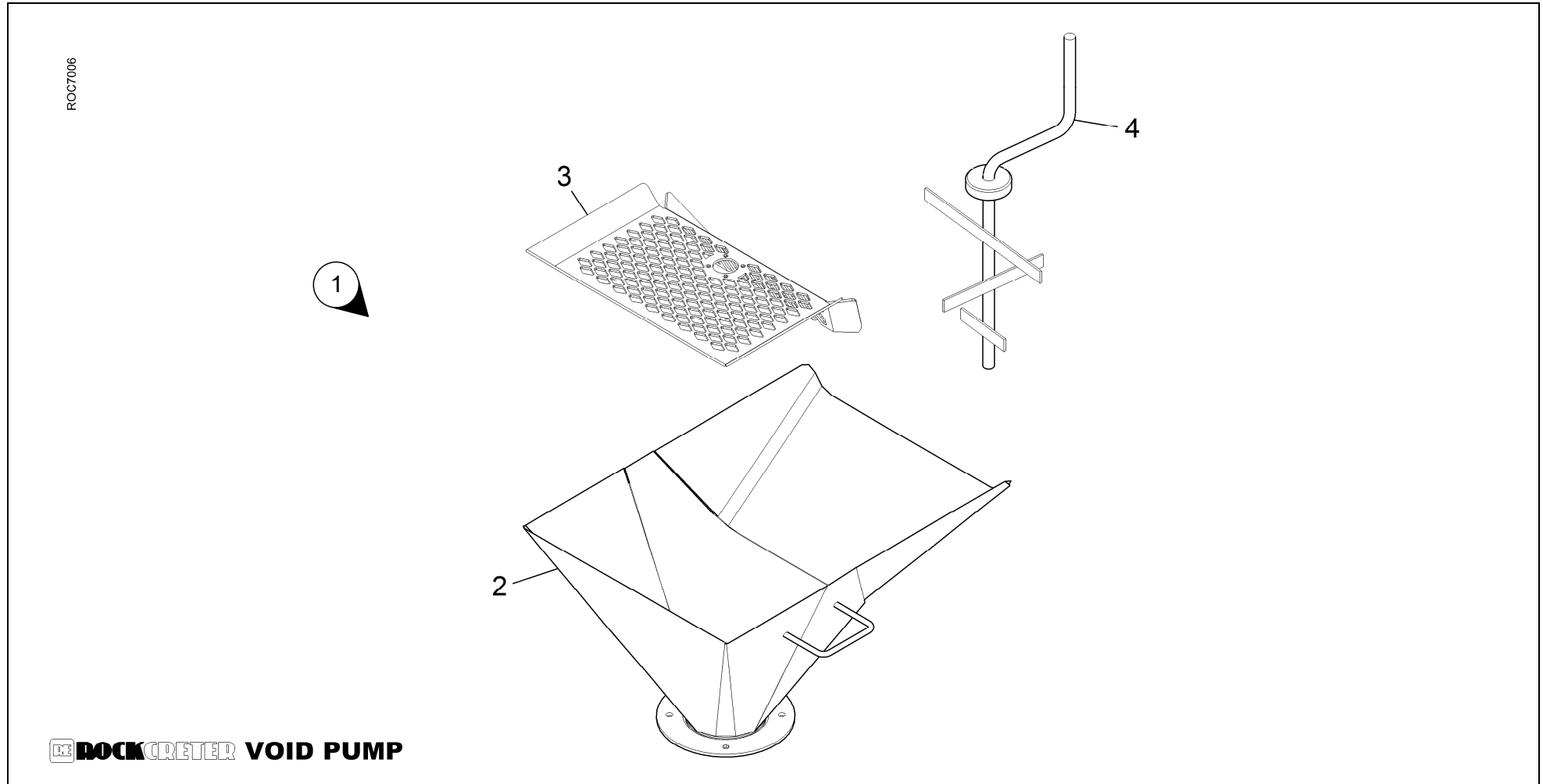
3. STAR FEEDER ASSEMBLY



3. STAR FEEDER ASSEMBLY

ITEM NO	DESCRIPTION	PART NO	QTY	COMMENTS
1	STAR FEEDER HOUSING	V021	1	
2	STAR FEEDER	V003	1	
3	BEARING	V003F	1	
4	GEARBOX MOUNTING BRACKET	V010C	1	
5	MIXER GEARBOX DRIVE	EA010C	1	
6	ELECTRIC MOTOR 0.35kW	EA023V	1	

4. TOP CHUTE ASSEMBLY



4. TOP CHUTE ASSEMBLY

ITEM NO	DESCRIPTION	PART NO	QTY	COMMENTS
1	TOP CHUTE ASSEMBLY	V020	1	
2	FEEDER HOPPER	V001	1	
3	SIEVE	V002	1	
4	MIXING PADDLE	V001M	1	

